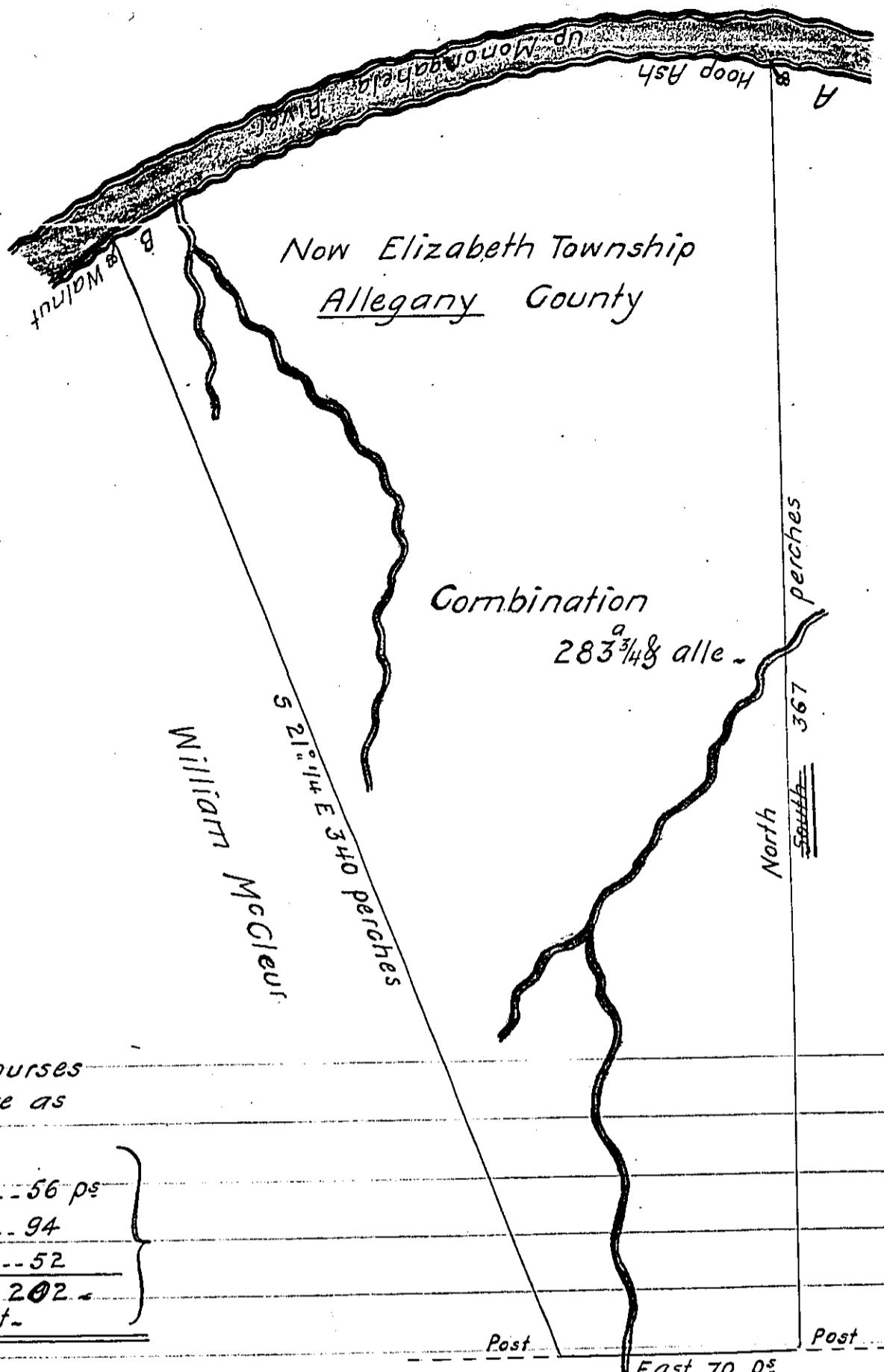


P-16-288



William Neily & Alexander Dunlaap in right of John Reed

The River Courses from A to B are as follows Viz -

S 88° 1/4 W	56 ps
S 75° W	94
S 62° W	52
202	

unto B a Walnut

Post East 70 ps Post

Philip Rodgers

Situated on the East side of Monongahela River in the New purchase Cumberland Co^{ty}- and Surveyed Unto Abraham Miller the first day of October 1770 & Returned on Two Warrants the one dated the 20th day of September 1770 for 80^a the other dated _____ To John Lukens Esq^r. there is but y^e one Warrant Surveyor General. By A. Mc Lane D.J. 5y^r.

IN TESTIMONY that the above is a copy of the original remaining on file in the Department of Internal Affairs of Pennsylvania, made conformably to an Act of Assembly approved the 16th day of February, 1833, I have hereunto set my Hand and caused the Seal of said Department to be affixed at Harrisburg, this twenty-fourth day of December 1905.

Goac N Brown
Secretary of Internal Affairs.